

ASSEMBLY INSTRUCTION

PU88A6M - RJ45 Cat6 Unshielded Premium Plug

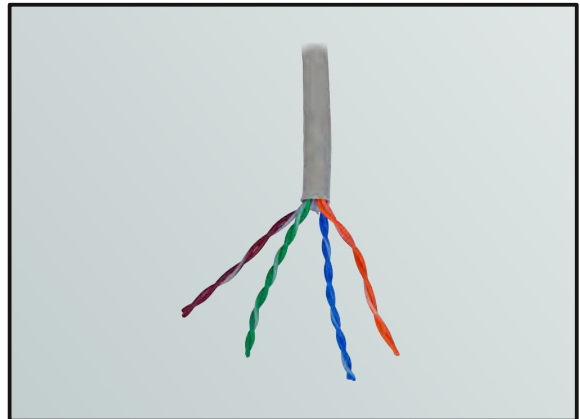
Prerequisites

- Plug PU88A6M with insert WMBA6M-08/ -10/ -11
- Hood Obligatory, PC-UX6M for cable OD 5.5 mm, PC-UA6M for cable OD 6.5 mm
- Cable 5.5 mm < OD < 6.5 mm, 4 twisted pairs, unshielded, > Cat6, stranded or solid, max. wire OD acc. to insert: 0.80 mm, 1.00 mm or 1.15 mm to max. 0.2 mm less
- Tool Handtool K750 or air crimper machine with insert U149 from bex



Step 1

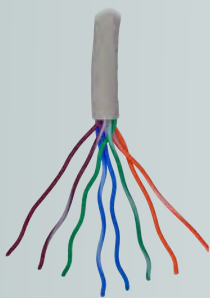
- Slide the hood over the cable
- Strip the cable insulation > 20 mm



Step 2

- Assure that all wires are still intact
- Separate the pairs of wires

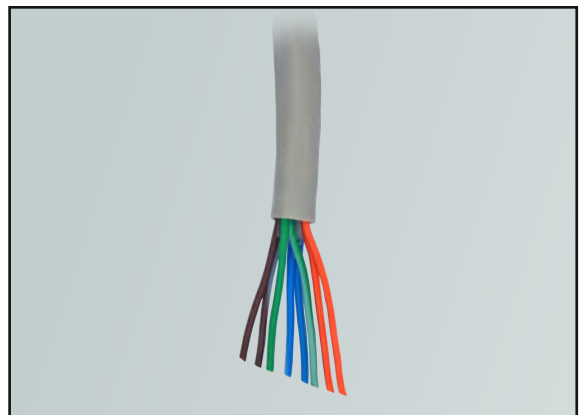
Wiring Scheme: TIA 568 B



- 1: white/ orange
- 2: orange solid
- 3: white/ green
- 4: blue solid
- 5: white/ blue
- 6: green solid
- 7: white/brown
- 8: brown solid

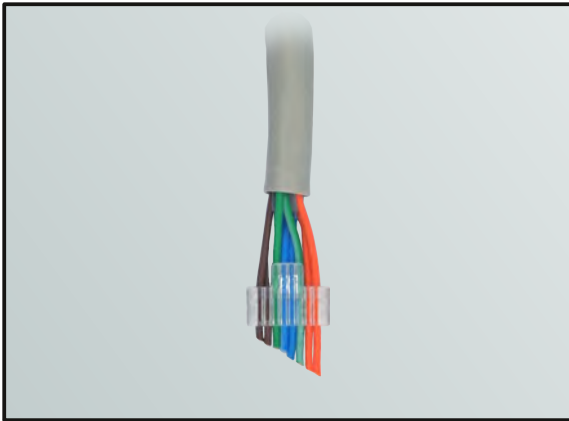
Step 3

- Untwist and straighten the wires
- Arrange them according to TIA 586 B



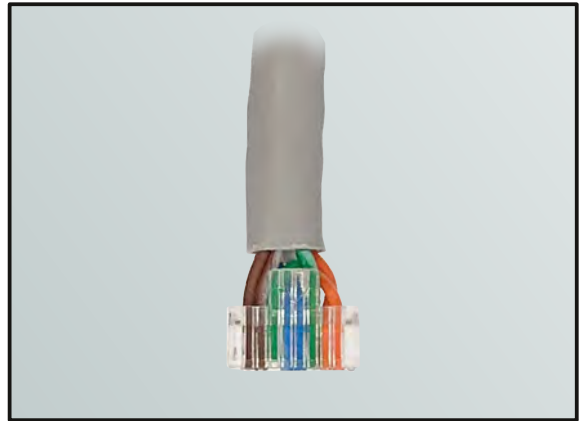
Step 4

- Cut the wires diagonal for insertion
- Hold the insert with its arrow upwards



Step 5

- Pull the wires completely through
- Reduce the space to cable jacket



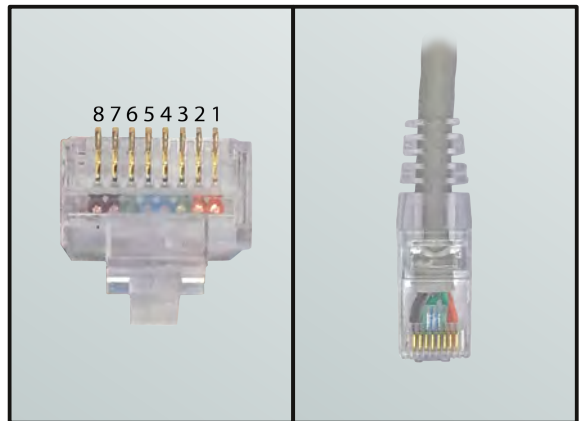
Step 6

- Cut the wires straight insert's edge
- Hold the plug with contacts upwards



Step 7

- Press the cable jacket into the plug
- Assure the strain relief is above jacket



Step 8

- Control that all wires are at front
- Click the hood into the plug housing



Step 9

- Crimp the plug with handtool K750
- Control contacting and strain relief